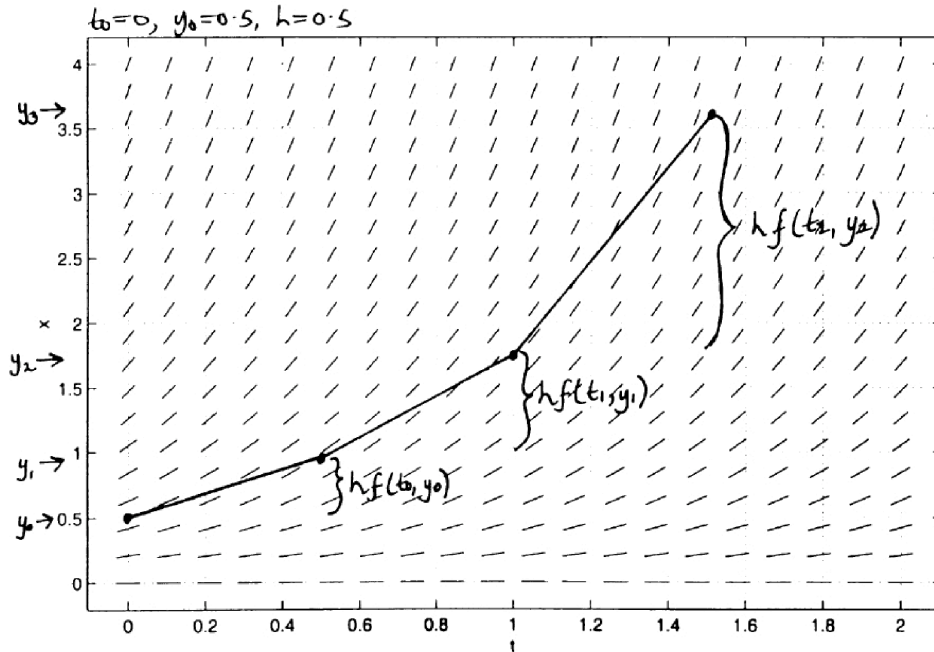


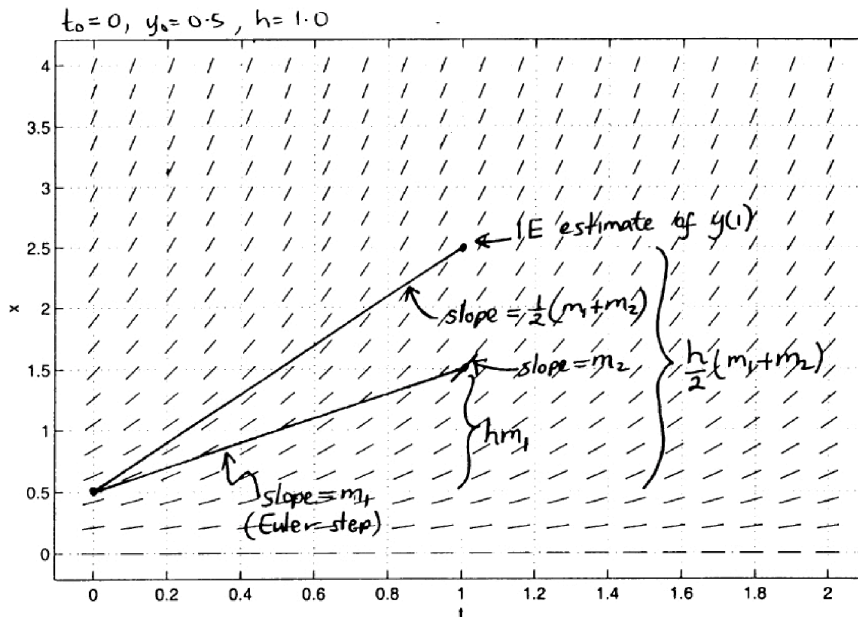
Maths 260: Pictures from Lecture 4

This lecture uses some important pictures to illustrate the ideas. Copies of the pictures used by the lecturer are given below.

The following picture illustrates the relationship between the slope field and the numerical solution obtained from Euler's method.



The next picture illustrates the relationship between the slope field and the numerical solution obtained with the Improved Euler method.



The following picture illustrates the relationship between the slope field and the numerical solution obtained with the 4th order Runge-Kutta method.

